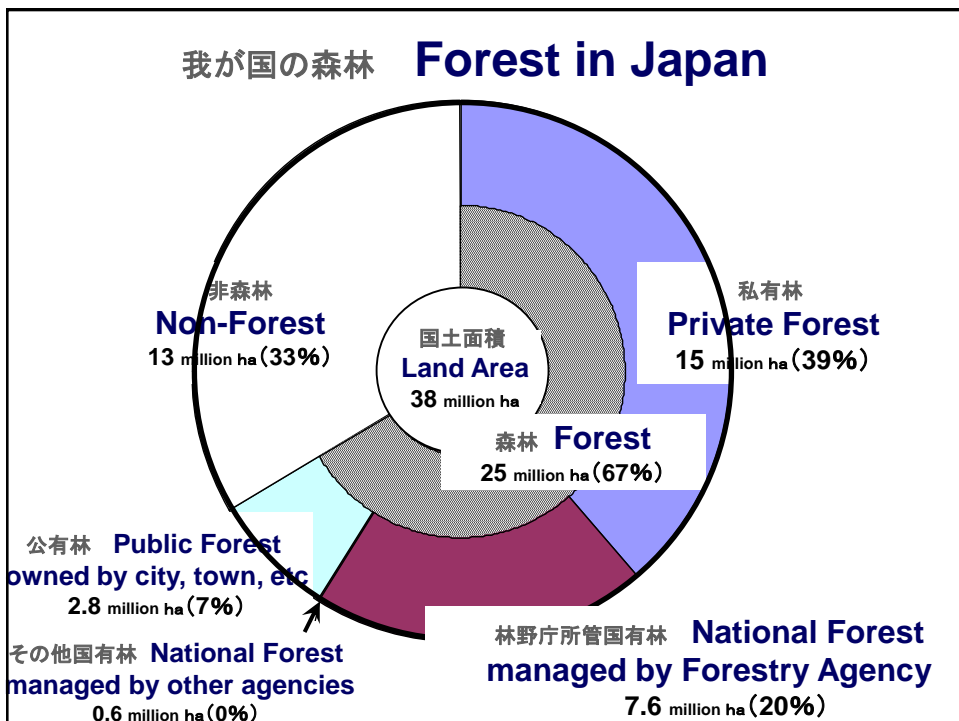


国有林野の生物多様性保全方策

Biodiversity conservation in National Forest in Japan

農林水産省 林野庁 国有林野部

Forestry Agency, Ministry of Agriculture, Forestry and Fisheries



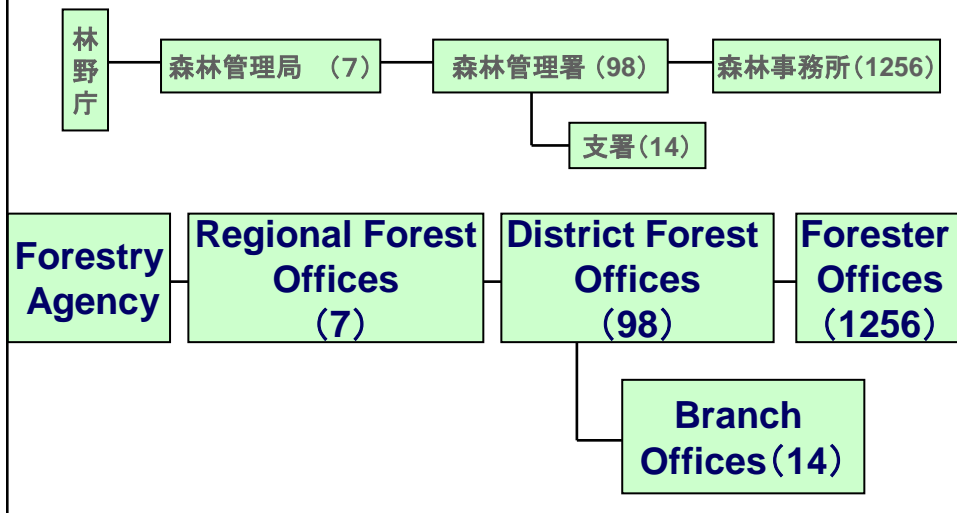
森林資源内容 Forest Resources

単位: 万ha (Unit: 10,000ha)

	天然林 Natural Forest	人工林 Planted Forest	その他 Others	計 Total
私有林 Private Forest	724 (50%)	674 (46%)	60 (4%)	1,458
国有林 National Forest	465 (61%)	236 (31%)	62 (8%)	762

国有林管理の主な組織

Organizational Structure for National Forest Management



国有林の分布
Distribution of national forest



森林生態系の例(天然林、湿地、岩石地)
**Pictures of Forest Ecosystem
(Natural Forest, Wetland, Rocky Area)**



森林生態系の例(人工林)

Pictures of Forest Ecosystem (Planted Forest)



森林生態系の例(里山林、溪畔林、海岸林)

Pictures of Forest Ecosystem (SATOYAMA, Riparian Forest, Coastal Forest)



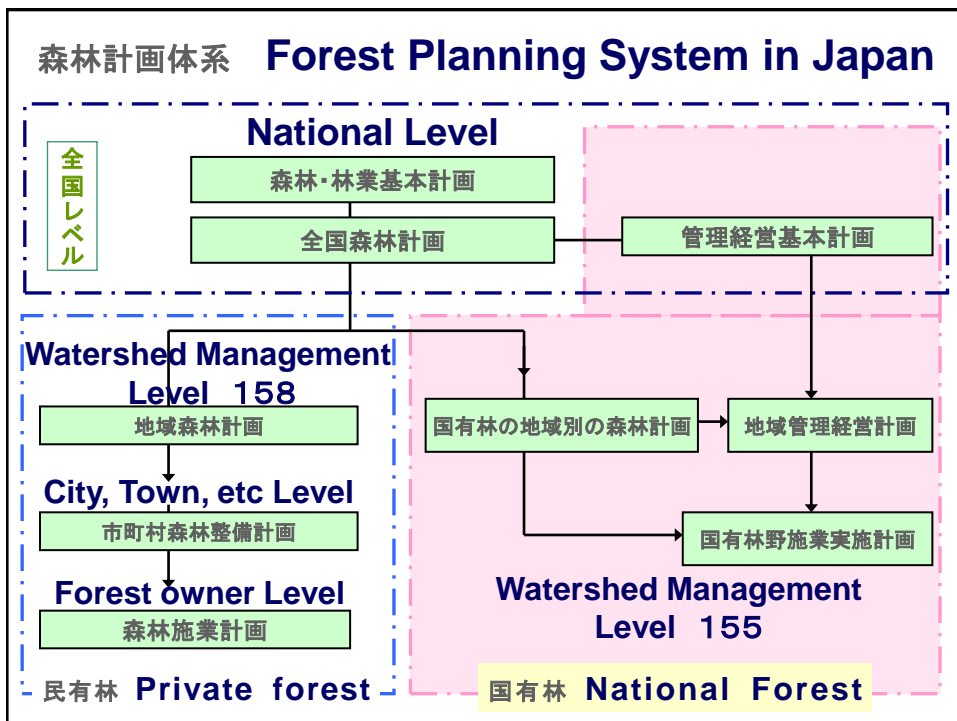
生物多様性保全に向けた基本的な考え方

Principle for the promotion of biodiversity conservation

生物多様性の保全と持続可能な利用を図る上では、流域等の一定の面的広がりの中において、様々なタイプの林相構造を持つ個々の森林が、時間の経過とともに、遷移や成長、攪乱により常に変化しながらも、バランス良く配置されることが望ましい。このことを踏まえ、国有林の管理経営に当たっては、森林計画を作成し、これに基づき、保護林の設定・管理や森林の整備・保全に、順応的に取り組む。

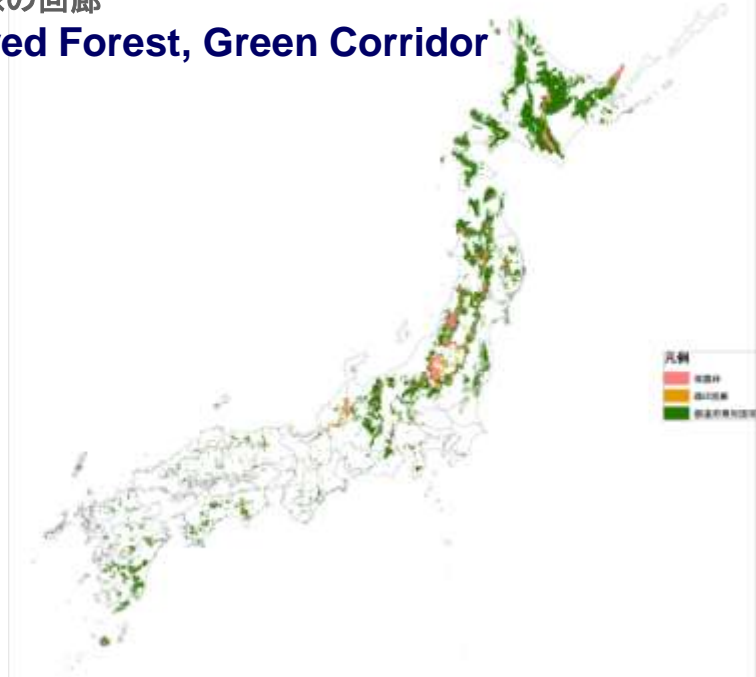
When aiming at biodiversity conservation and sustainable forest use, it is desirable that various types of forest plots be distributed in a well balanced manner at certain extent of area such as watershed which keep changing by transition, growth and disturbance with progress of time.

Based on this principle, national forest is managed by forest planning system, by which adaptive management is applied for the establishment and management of forest preserves and forest operation and conservation.



保護林、緑の回廊

Preserved Forest, Green Corridor



Management Strategies of Biodiversity Conservation

適切な森林施業の実施による林相構造の多様性の確保

Secure diversity of forest types through forest management

溪畔林等水辺の森林の保全による多様な森林の連続性の確保

Secure forest consecutiveness through conservation of riparian forest

ホットスポットの保全

Conservation of Hot Spots

劣化した森林生態系の再生

Rehabilitation of degraded forest

遺伝資源の域内保全

Conservation for genetic resources in the region

持続的・効果的な実施を促進

Promote the implementation with sustainable and effective manner

現場におけるPDCAサイクルの充積、森林現況のモニタリングの充実、人材育成、NPOとの連携等

Improvement of PDCA Cycle and Forest Monitoring, capacity building, collaboration with NPO, etc at field level

適切な森林施業の実施による林層構造の多様性の確保

To secure diversity of forest types through appropriate forest operation



・流域を単位とした異種異齢の林相のモザイク的な配置

・**Mosaic layout of various forest types of different species and ages at the Watershed Management level**

・個々の森林の果たすべき公益的機能と生産力とのバランスを考慮しつつ、過度な攪乱を抑制

・**To control the excessive disturbances considering the roles of environmental and productive functions of each forest plot**

溪畔林等水辺の森林の保全による多様な森林の連続性の確保

To secure the consecutiveness of diverse forest through conservation of riparian forest



・ 溪流沿いや尾根筋の森林を、保護樹帯として区分し、野生生物の移動経路や種の供給源等として保全

・**To designate riverbank and ridgeline as Preserved Zone in order to and conserve the zone for movement of wild lives and genetic resources**

・ 上流域から下流域までの森林の連続性の確保し、よりきめ細かな森林生態系のネットワークの形成

・**To manage watershed from upper to down streams and to improve forest ecosystem network**

ホットスポットの保全

To conserve Hot Spots



・地域の隔離された小規模な森林生態系等の保護・管理の推進

・**To promote preservation and management of small ecosystems in segregated areas**

・保護林や緑の回廊の設定の推進

・**To promotion establishment of Preserved Forest and Green Corridor**

劣化した森林生態系の再生

To rehabilitate degraded forest ecosystem



・シカの個体数管理等による野生鳥獣被害の抑制

・**To reduce the damages in forest caused by wild animals through population control of dears etc.**

・シカの食害、ナラ枯れ、外来種侵入等により劣化した森林の再生

・**To rehabilitate the degraded forest damaged by dears, wilt disease of oak, invasive species etc.**

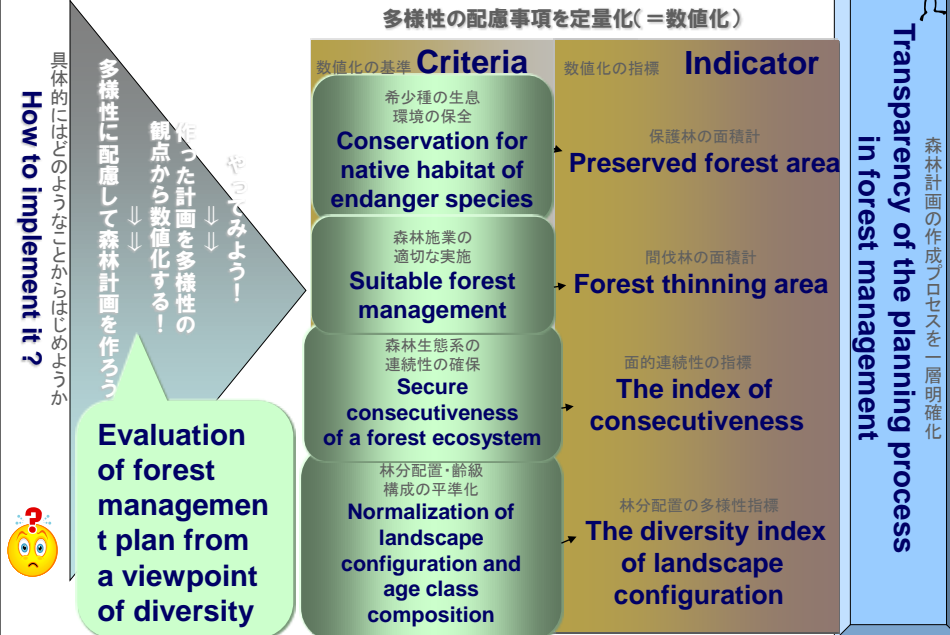
To conserve genetic resources in the region

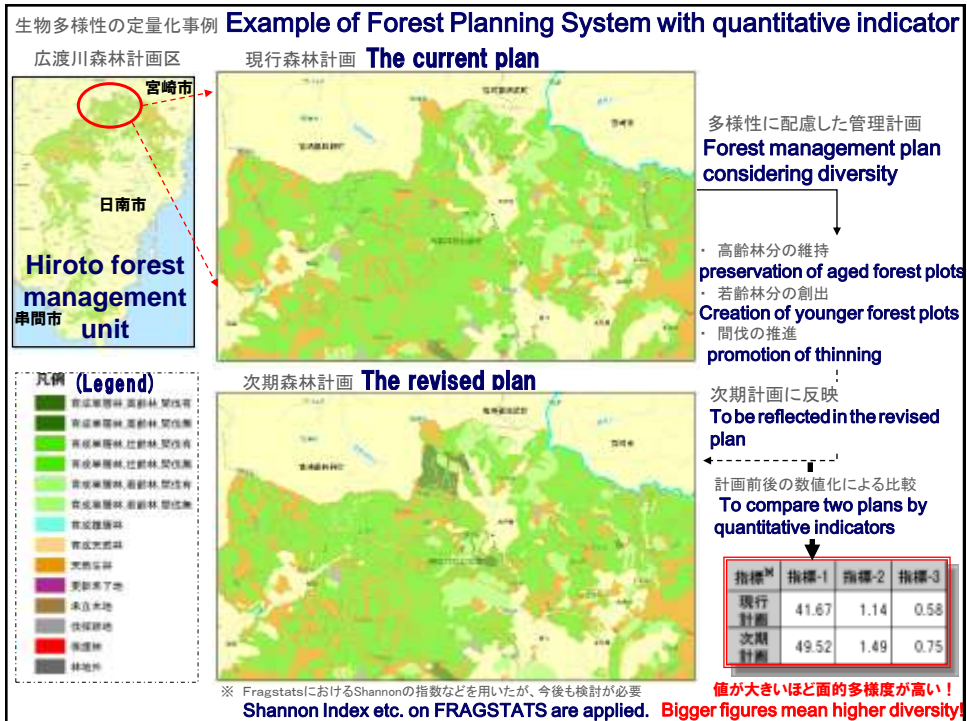


- ・林木遺伝資源保存林等の保全・整備による遺伝資源の保存・利用
- ・To preserve and use genetic resources through conservation of Preserved Forest for Tree Genetic Resources
- ・遺伝子情報を踏まえた苗木の使用
- ・Use of seedling considering the genetic information

Biodiversity conservation in forestry management

多様性の配慮事項を定量化(=数値化)





針広混交林(愛知段戸国有林)

Mixed Forest of conifer and broadleaves species
in Dando National Forest, Aichi Prefecture